

PART OF S.W. 1/4
SECTION 33, T.7N., R.1W., S.L.B. & M.

TAXING UNIT: 10

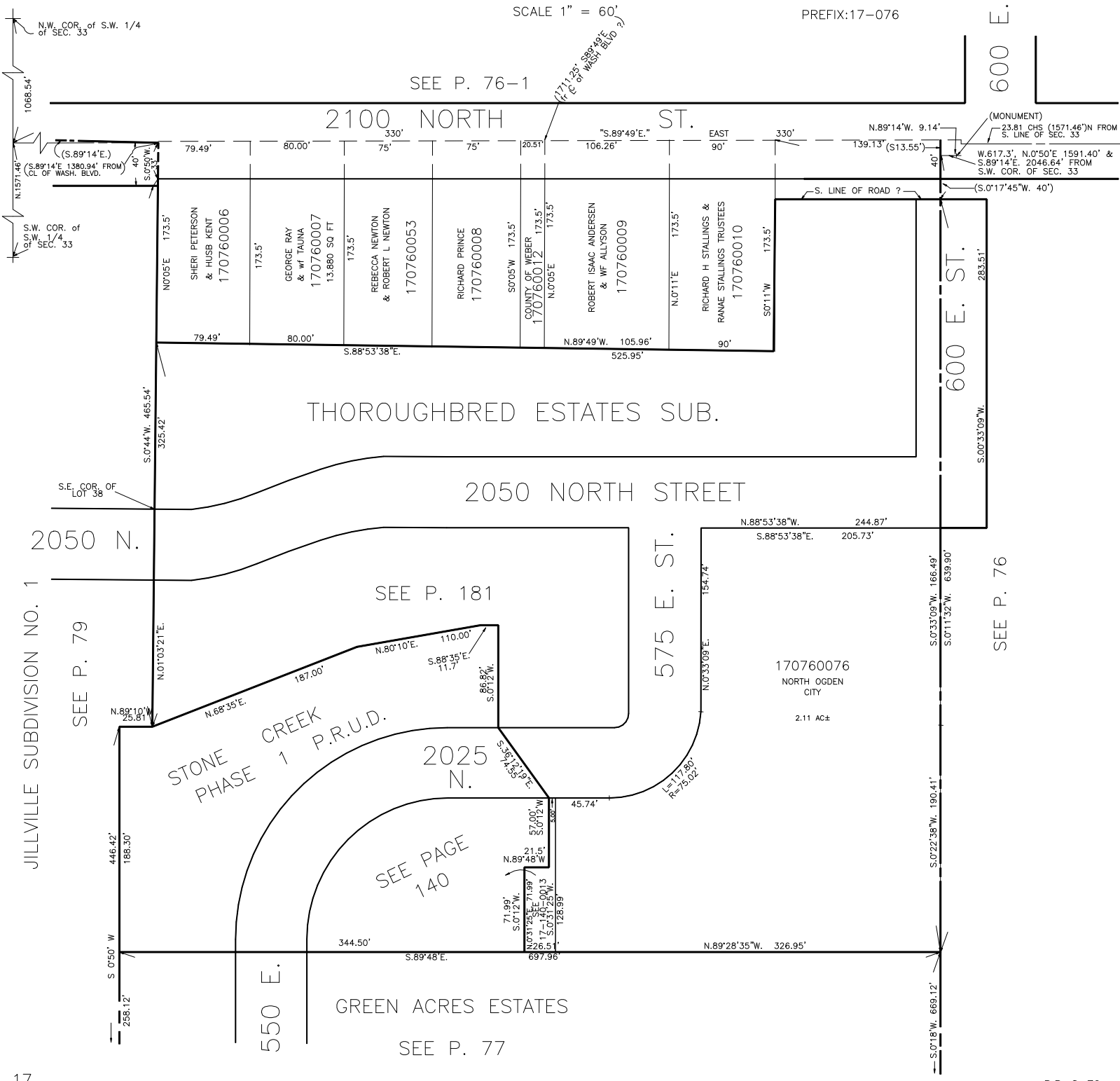
IN NORTH OGDEN CITY

SCALE 1" = 60'

PREFIX:17-076

SEE P. 76-1

600 E.



N.W. COR. of S.W. 1/4 of SEC. 33

1068.54'

(S.89°14'E. 1380.94' FROM CL. OF WASH. BLVD.)

S.89°14'E. 1380.94'

S.W. COR. of S.W. 1/4 SEC. 33

N.1571.46'

40'

S.0°50'W. 173.5'

40'

N.0°05'E. 173.5'

S.0°44'W. 465.54'

325.42'

S.E. COR. OF LOT 38

JILLVILLE SUBDIVISION NO. 1

SEE P. 79

SEE P. 181

SEE PAGE 140

SEE P. 77

446.42'

186.30'

S.0°50'W. 258.12'

N.0°10'32"E. 173.5'

N.89°10'W. 25.81'

N.89°10'E. 187.00'

N.68°35'E. 110.00'

S.88°35'E. 11.7'

86.89'

S.0°12'W. 128.99'

71.99'

S.0°12'W. 69.73'

22.6'

17.14'

60.13'

128.99'

57.00'

S.0°12'W. 45.74'

N.89°48'W. 21.5'

N.89°48'W. 69.73'

344.50'

S.89°48'E. 326.95'

N.89°28'35"W. 45.74'

N.0°33'09"E. 154.74'

N.88°53'38"W. 244.87'

S.88°53'38"E. 205.73'

170760076

NORTH OGDEN CITY

2.11 AC±

S.0°33'09"W. 190.41'

S.0°11'32"W. 639.90'

S.0°22'38"W. 190.41'

S.0°18'W. 669.12'